



# Presentation to City Council

Budget update November 20, 2023



# Thank You for listening



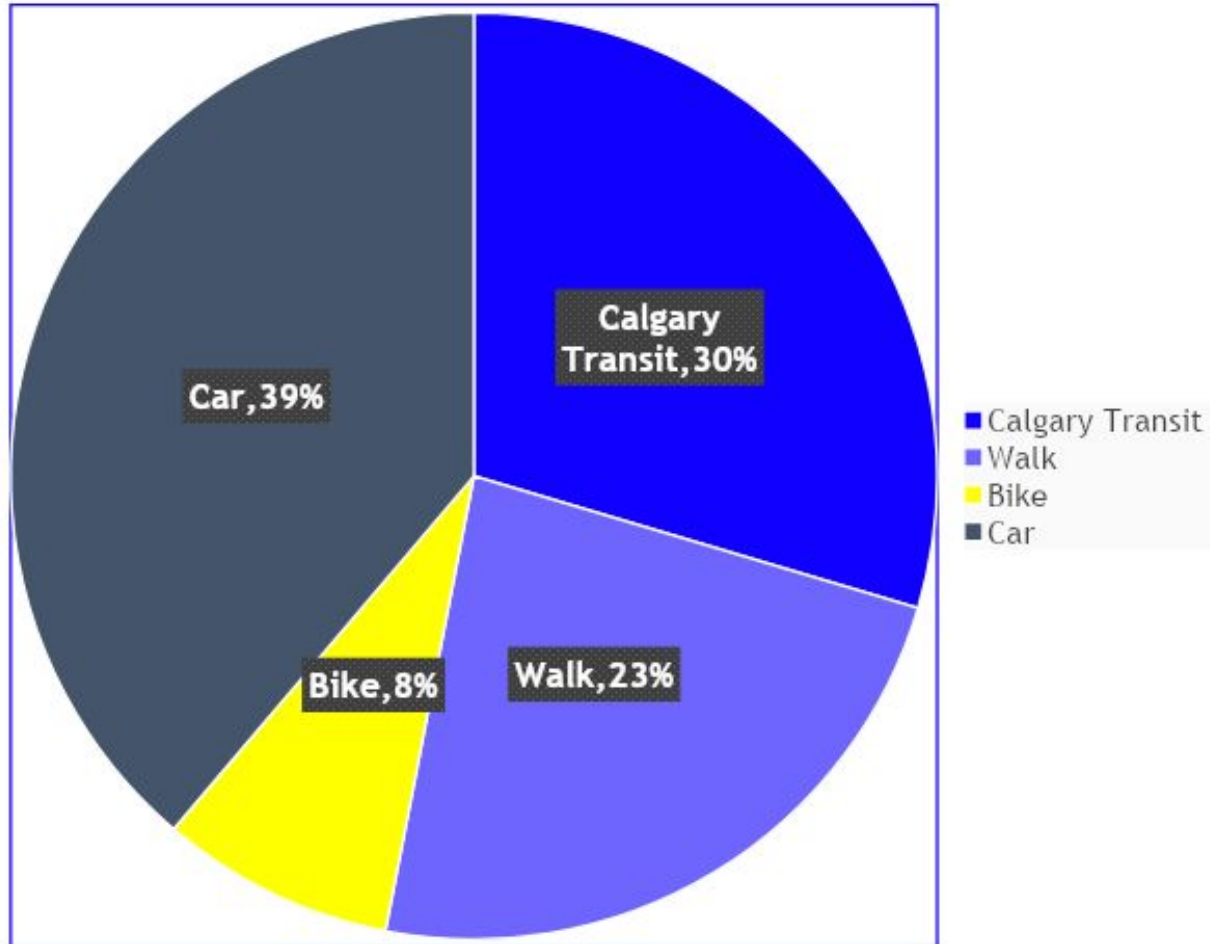
- ▶ Reduced neighbourhood streets to 40 km/h
- ▶ Focussed 5A on routes to school
- ▶ Committed funding to 5A Network
- ▶ Transparent and pro-active with engagement
- ▶ Build 5A when rep'ing - building back better!
- ▶ Free Transit for Kids under 12  
YAHOO!

**And recognizing cycling builds resilient communities!**



# North Trail High School Highest Cycling School 8%

Mode of Travel

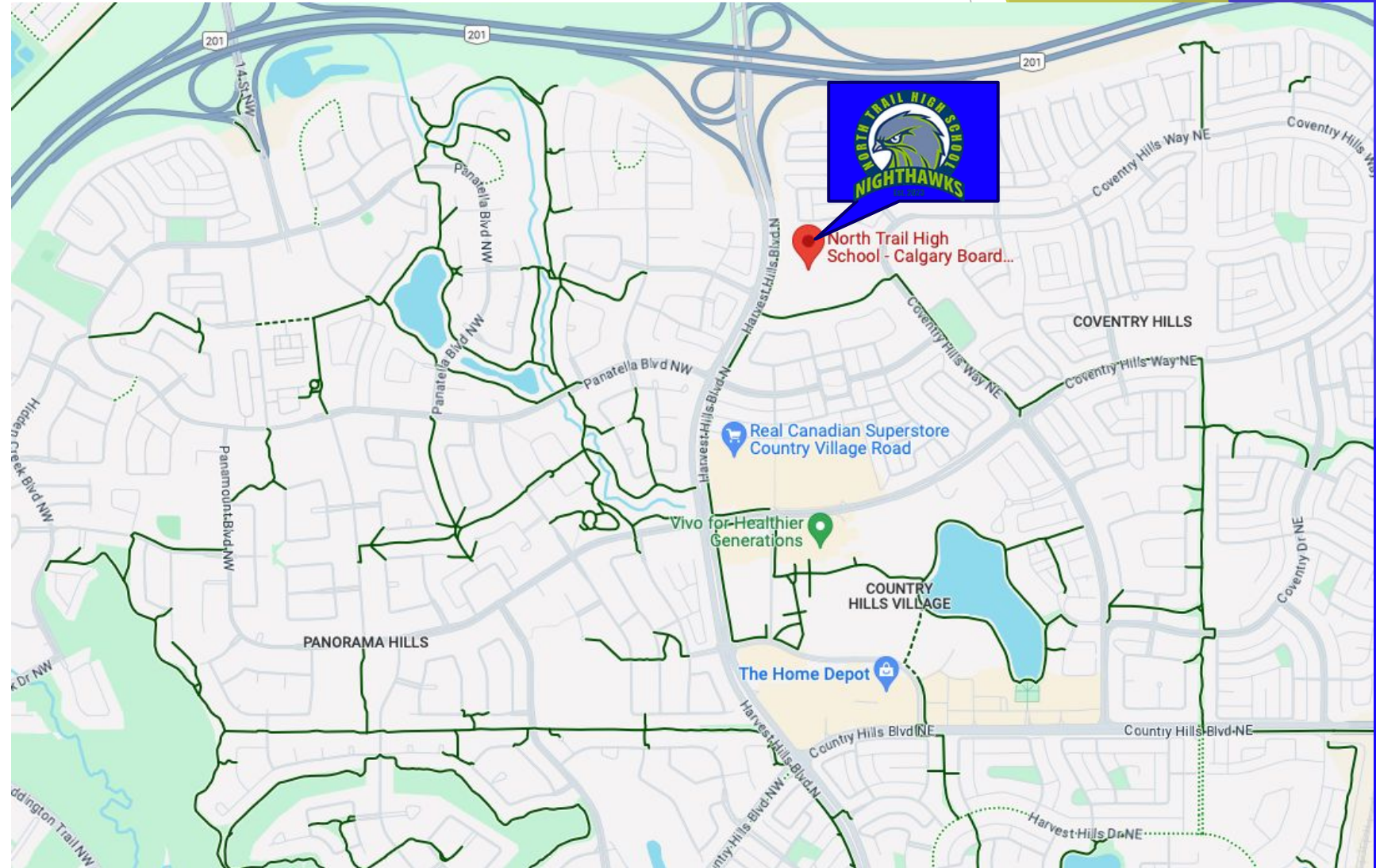


- 400 bike parking spots
- 80% of students live within 3 km
- 71% take less than 20 minutes to get to school



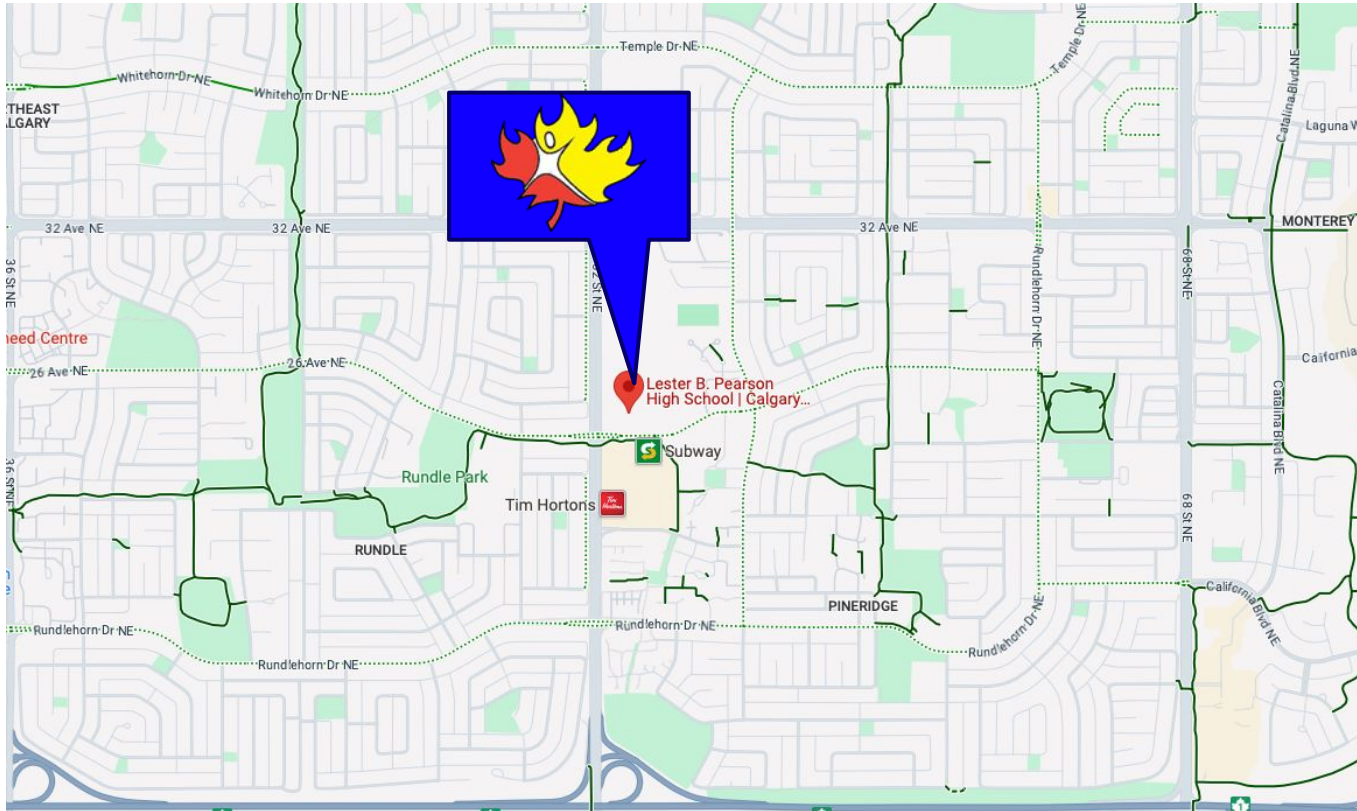
# Why?

- Pathways to grounds from all directions
- No fences - access!
- School population who live nearby
- STILL 40% drive!

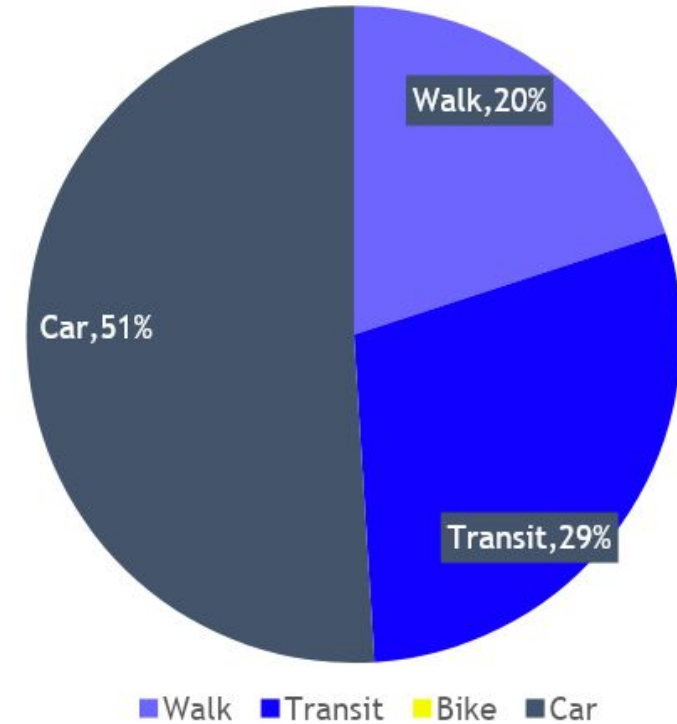




# Lester Pearson HS Worst Cycling Rate: 0%



Mode to school



- 40 bike parking spots
- NO safe Pathways from ANY direction across green space
- Lack of mid-block crosswalks on 52<sup>nd</sup> ST.

- Fully fenced grounds
- No wayfinding from Train station
- 80% of students live within 3 km
- Using active modes is challenge

# Small investment = Big returns

Two items related to 5A were reduced from Original Ask to today

Option #3 - Reduced 52%

Option #16 - Reduced 50%

Please reconsider this. Be a partner to empowering youth.

Transit is expensive

Students lack skills so safety is vital

Value strong communities?

Getting kids out of cars, walking and biking builds community



# Imagine every HS school with cycling rates of NTHS



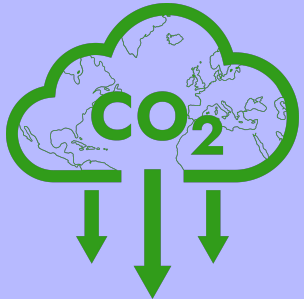
## Improved pedestrian safety

Let's win the chicken and egg battle. Fewer cars means increased personal safety for pedestrians



## Less congestion

360 FEWER trips to and from EVERY high school EVERY DAY  
Trips that often pass Elementary Schools



## Environmental Resilience

180,000 less KM driven on trips to school PER SCHOOL  
885,000 KG reduction in Emissions / year from 30 YYC High Schools



# Speed Kills and Deters active modes



Source: Vision Zero Two-Year Action Strategy



# 52<sup>nd</sup> AVE SE/NE = Example of inconsistency



North of 16<sup>th</sup> MUP abuts road is **60 km/h**

**Students crossing:** Pearson, McNally, Mandela



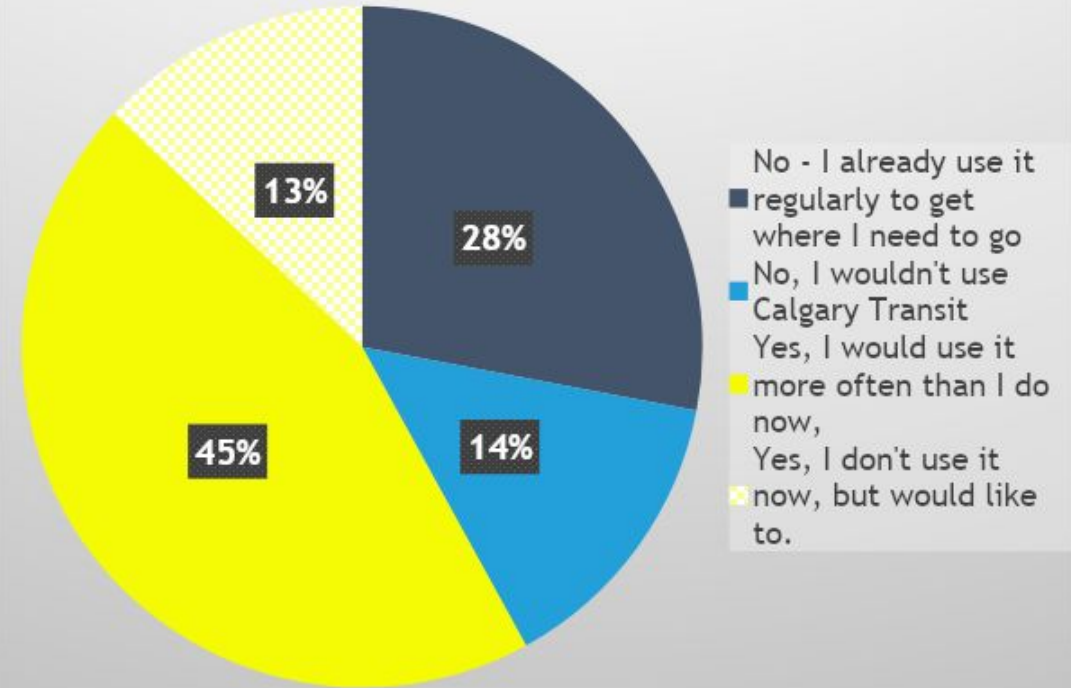
South of 16<sup>th</sup> same road design, same malls and features - **50 KM/h**

**Students crossing:** Forest Lawn, Lacombe, Jack James

# Making Transit Accessible encourages active travel

- ▶ Make it easier for youth to access low income passes
- ▶ Create a plan to work with Alberta Education to PAY for student transportation - like U-Pass
- ▶ Continue to allow bikes on trains and equip ALL express buses with bike racks

We asked HS if transit was free, would you use it more





Please invest in fostering community  
AND our kids' safety



Thank you for your time

